



Time flies! February will be over in the blink of an eye. And this year, at PRIME we are more prepared than ever to face new challenges and implement ambitious projects.

[Learn more](#)



Within the framework of **International Women's Day** on March 8, we have organized a panel with female evaluators where they will tell us about their experiences and the challenges they have faced. Don't miss this event on [our Facebook Live!](#)

Date: Tuesday, March 9th, 2021.

Time: 10:00 -11:30 hrs (CTS - Mexico City time)

Language: Spanish



On February 22, the online Impact Evaluation course started for the first time in Portuguese. This was possible thanks to the teamwork with [CLEAR for Brazil and Lusophone Africa \(FGV ESSP CLEAR\)](#), the [Inter-American Institute for Cooperation on Agriculture \(IICA\)](#), and IFAD Brazil.



Keep up to date with our activities: if your personal information has changed (contact details, place of residence, employer, etc.) or if you would like to receive the newsletter in another mailbox, please let us know at ifad-clear@cide.edu

Rural Blog

M&E and Stakeholders: The use of M&E for decision-making in CHARM2 Scaling Up Project

By: Isabel Tejo | Country: The Philippines

When the expected results are not achieved, M&E tools can be great allies in communicating with stakeholders. Isabel Tejo, who took the Fundamentals of M&E training in 2018-2019 (Shanghai-Istanbul), shares how she used data visualization tools to present and explain the progress and financial status of her project to relevant stakeholders. [Read the full text.](#)



Piloting and triangulation: Key elements in the development of quality evaluations

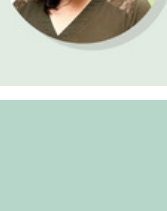
By: Claudia Mir | Country: México

Sometimes, due to economic and time constraints, stakeholders overlook essential processes for conducting quality evaluations. Based on her experience in a medicine supply evaluation in Mexico, Claudia Mir, trainer at PRIME, shares the implications and consequences of ignoring its relevance. [Read the full text.](#)

Piloting and Triangulation: Key Elements in the Development of Quality Evaluations

CLAUDIA MIR

Independent evaluator and M&E trainer



Effective communication of evaluation findings

By: Emil Salim | Country: México

Developing a communication plan is essential in any type of evaluation. Emil Salim, CLEAR LAC's training and communication coordinator, presents four steps you should not forget for effective communication: setting communication objectives, knowing your audience, developing key messages, and selecting your communication channels. [Read the full text.](#)

Effective Communication of Evaluation Findings

EMIL SALIM

Training and Communication Coordinator at CLEAR LAC



We want to read you

Remember that our blog is open to your contributions. If you are interested in writing an article write to us at ifad-clear@cide.edu

M&E Resources

METHODS LAB

ADDRESSING GENDER IN IMPACT EVALUATION

WHAT SHOULD BE CONSIDERED?

1. Gender equality and women's empowerment are essential for the sustainable development of all societies. This guide provides a framework for integrating gender into impact evaluation. It covers the following topics:
 - Why gender matters in impact evaluation
 - How to integrate gender into impact evaluation
 - Tools and techniques for gender integration
 - Case studies and examples of gender integration in impact evaluation

Addressing Gender in Impact Evaluation. What Should be Considered (Fletcher, G., 2015)

Would you like to incorporate a gender approach in your projects, but don't know how to do it? In this guide, published by The Methods Lab, in collaboration with [BetterEvaluation](#), [ODI](#), and the [Australian Department of Foreign Affairs and Trade](#), Gillian Fletcher presents conceptual tools that will help you both clarify what a gender approach entails, as well as recommendations and methods to consider when assessing gender impact. [Read the document here.](#) (In English.)

Mejores criterios para una mejor evaluación

Definiciones revisadas de los criterios de evaluación y principios para su utilización



OCDE
PARADIGMA EVALUACION

Mejores criterios para una mejor evaluación. Definiciones revisadas de los criterios de evaluación y principios para su utilización (OCDE, 2019)

This adaptation of "[Better Criteria for Better Evaluation](#)" is the result of a joint effort by the OECD and CLEAR LAC, among other organizations. Its purpose is to promote better criteria for project, program, and policy evaluations among the Spanish-speaking evaluation community. [Read the document here.](#) (In Spanish.)

Events

A Focus on Results and the Road to 2030. The CARICOM Results-Based Management System and the Global Evaluation Initiative: A launch event.

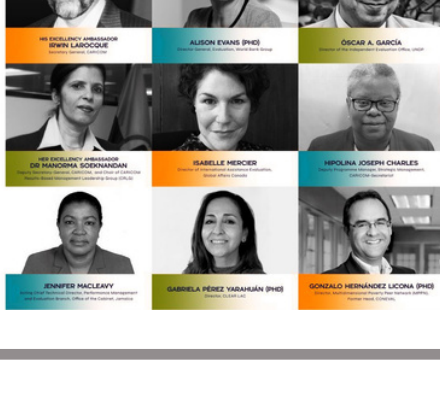
The Caribbean Community (CARICOM), Results-Based Management System (RBM) system was launched on January 27. If you missed it, you can still check it out and learn more about this collaboration between the [Independent Evaluation Group \(IEG\)](#), [CARICOM](#), the [Global Evaluation Initiative \(GEI\)](#), and the [Centre for Learning on Evaluation and Results for Latin America and the Caribbean \(CLEAR LAC\)](#). (In English.)

[Watch the event](#)

A FOCUS ON RESULTS AND THE ROAD TO 2030

The CARICOM Results-Based Management System and the Global Evaluation Initiative: A launch event

27 JAN - WEDNESDAY
10:00 AM EST - 1:00 PM GUAYANA
#CloseTheMandEGap



More news

XII Diploma in Public Policies and Evaluation

From April 9 to July 23, [CLEAR LAC](#), in collaboration with the [Centro de Investigación y Docencia Económicas \(CIDE\)](#), will offer the thirteenth edition of its Diploma in Public Policy and Evaluation. This professional training program aims to provide students with a global vision of the main tools and methodologies for the evaluation of public policies and programs. [If you are interested in finding out more about the syllabus and registration requirements](#), you can consult them here. (In Spanish.)



Diplomado en Políticas Públicas y Evaluación



Follow us on our social media:



Carretera México-Toluca, Santa Fé, Lomas de Santa Fé, Álvaro Obregón, Mexico City, 01210.

